



**Yuyao Kewei International Trading Co.**

Email: [jjalin@cymy.me](mailto:jjalin@cymy.me)

Official website: 1.<https://cymy.me> 2.<https://kwgj.site>



# CON TEN TS

**01** COMPANY PROFILE

**02** PRODUCT INTRODUCTION

**03** ABOUT US

01

# COMPANY PROFILE

Yuyao Khorvi International Trading Co., Ltd.

Your Reliable Hardware Fittings Export Partner

Why Khorvi?

- ✓ 30+ Countries Exported
- ✓ 100+ Global Partners
- ✓ 98%+ Customer Satisfaction for 5 Years

Our Strengths:

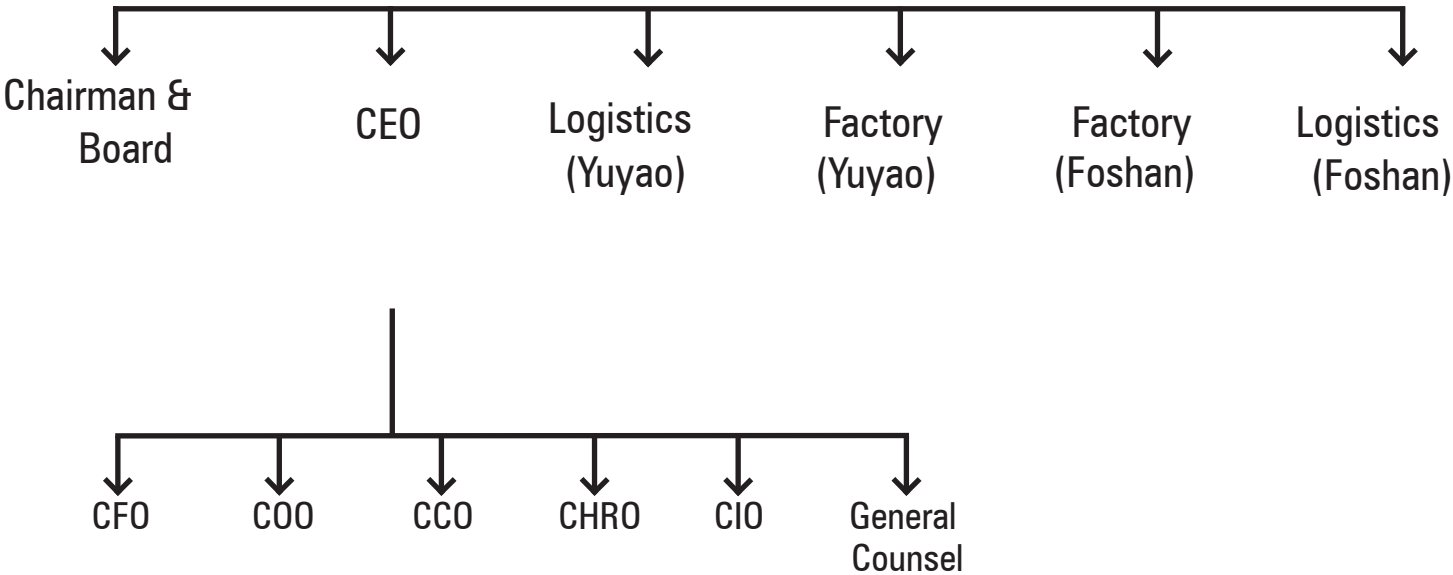
- ✓ Standardized production, zero deviation
- ✓ Global supply network, fast response
- ✓ 10+ Years OEM/ODM Experience
- ✓ One-on-one Project Support

We deliver more than products —  
We deliver quality, speed, and trust.

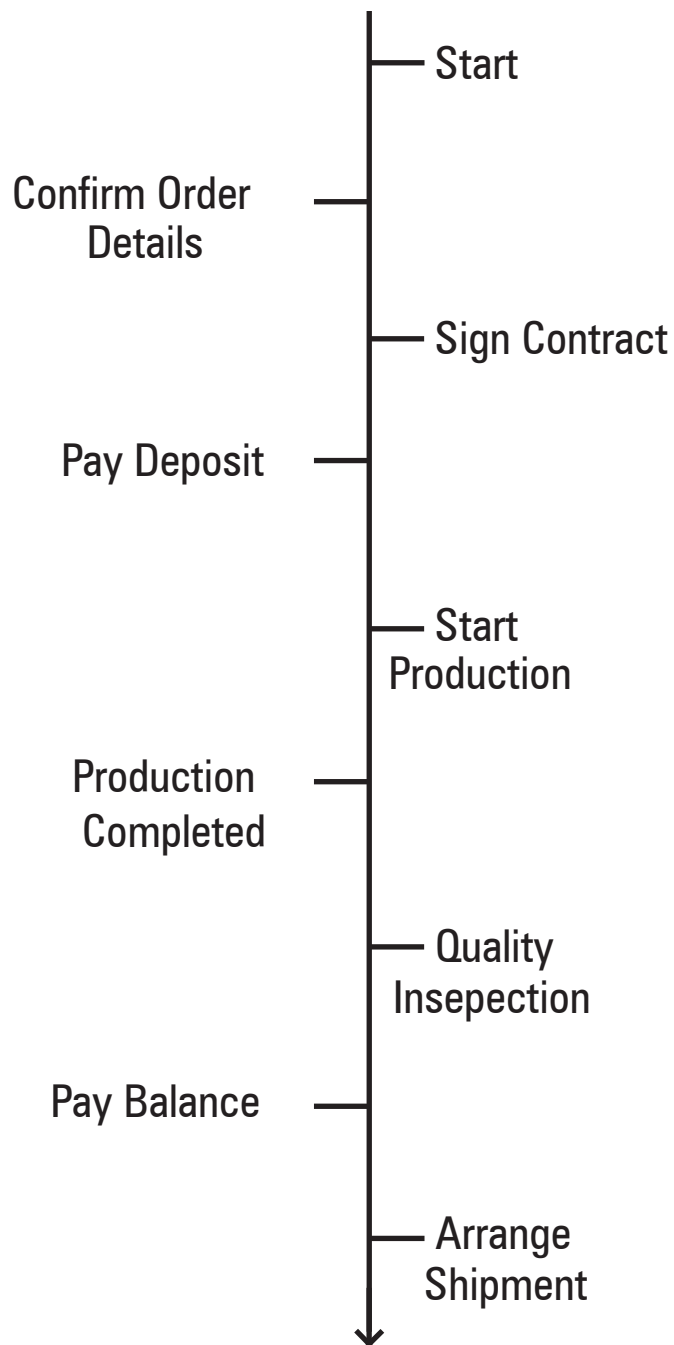
# Company Organizational Strecture

## Headquarters

(Yuyao)



## Order Fulfillment Process



02

## **PRODUCT INTRODUCTION**



# 01 American Barn Door005 - with 0568BM Buffer



## Specifications:

- Door Type: Sliding barn door
- Material: Carbon steel + Nylon rollers
- Finish: Black powder coated
- Track Length: Customizable
- Load Capacity: Up to 90kg
- Buffer Type: 0568BM integrated soft-close buffer
- Installation: Wall-mounted rail system with easy assembly kit

## Overview:

Premium barn door sliding system with integrated soft-close technology, designed for smooth and quiet operation in modern interiors.

# 02

## Block and Tackle



### Specifications:

- Type: Ball bearing - Spring assisted
- Finish: Zinc plated
- Cycle Test:  $\geq 50,000$  times
- Application: Drawers in heavy domestic, workshop or industrial use
- Material: Cold-rolled steel
- Load Capacity: 30–50 kg
- Extension: Full-extension

### Overview:

Ball bearing drawer slide with spring-assisted mechanism for smooth extension and reliable performance.

# 03 90 Degree Angle Hinge



## Specifications:

- Opening Angle: 90°
- Closing Type: Soft-close / Clip-on
- Material: Cold-rolled steel
- Cycle Test:  $\geq 50,000$  times
- Application: Standard cabinet mount

## Overview:

Durable hinge engineered for cabinets requiring right-angle door mounting, ensuring stability and a soft-close mechanism.

# 04 45 Degree Angle Hinge



## Specifications:

- Opening Angle: 45°
- Closing Type: Soft-close / Clip-on
- Material: Cold-rolled steel
- Cycle Test:  $\geq 50,000$  times
- Application: Corner cabinet mount

## Overview:

Angled hinge solution for unique cabinetry and corner door designs, featuring easy installation and long lifespan.

# 05

## Aluminum Frame Hinge



### Specifications:

- Material: Aluminum + steel
- Mounting Type: Clip-on
- Cycle Test:  $\geq 50,000$  times
- Application: Aluminum glass doors

### Overview:

Special hinge designed for aluminum frame doors, combining strength, aesthetics and ease of assembly.

# 06 Three-Section Hidden Cushion Slides (All variants)



## Specifications:

- Door Type: Sliding drawer
- Material: Cold-rolled steel
- Finish: Black powder coated
- Load Capacity: Up to 45kg
- Track Length: 300–600mm
- Buffer Type: Hydraulic soft-close buffer
- Special Features: Full-extension, concealed design, lateral stability

## Overview:

Concealed full-extension drawer slides with integrated soft-close functionality, suitable for high-end furniture.



Email: [jialin@cymy.me](mailto:jialin@cymy.me)

Official website: 1.<https://cymy.me> 2.<https://cymy.store>